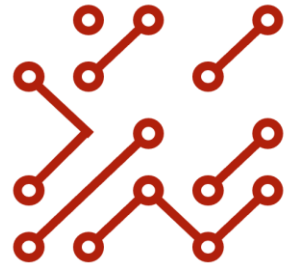


Artificial Intelligence Glossary



Computing & Digital
Innovation Centre

LEARN SHEFFIELD

This glossary was inspired by the work of [CAS Include](#), and it has been refined and updated by the Sheffield eLearning Service.

It is published under a Creative Commons [Attribution 4.0 International](#) licence.

You are free to use, share and adapt the content, but with credit given to the [Sheffield Computing & Digital Innovation Centre](#), indicate any changes made, and link to the license.

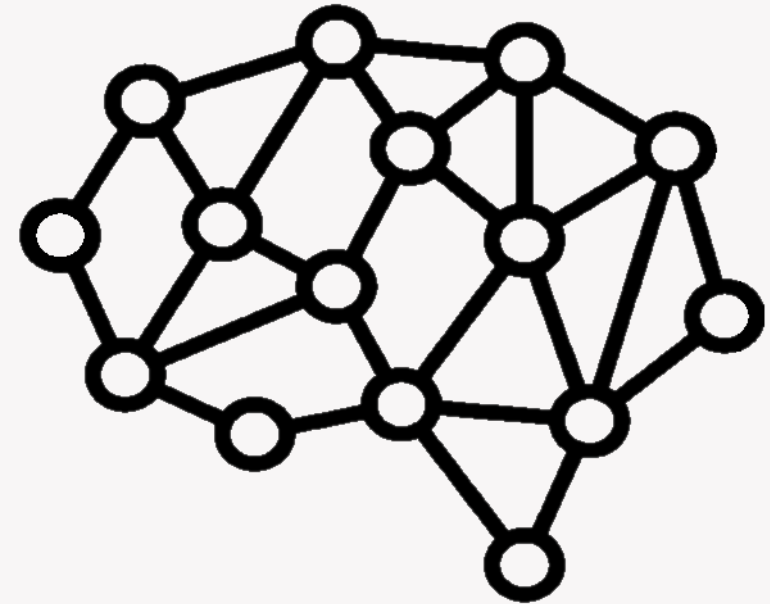
Using the Glossary

- Pre-expose your learners to the key terms that are required for the lesson.
- Select a small number of relevant terms each time.
- Model and explain the key terms in the lesson to support understanding.
- Encourage learners to use the technical vocabulary themselves.
- You may wish to use different pictures that are relevant to your context.

Artificial Intelligence (AI)

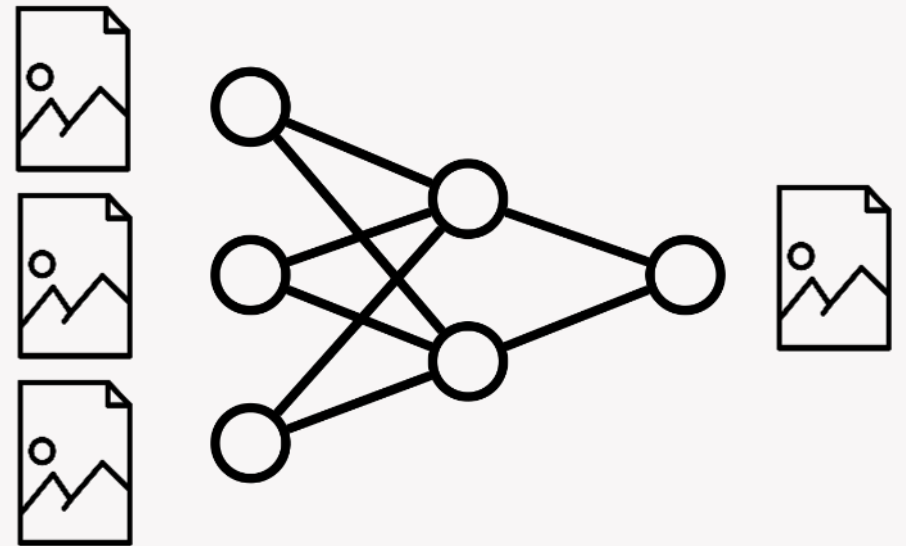
KS1: A computer program that is trained to do difficult tasks like a human can, e.g. have a conversation or make up new images and music.

UKS2: A computer system that simulates human intelligence and can improve with experience.



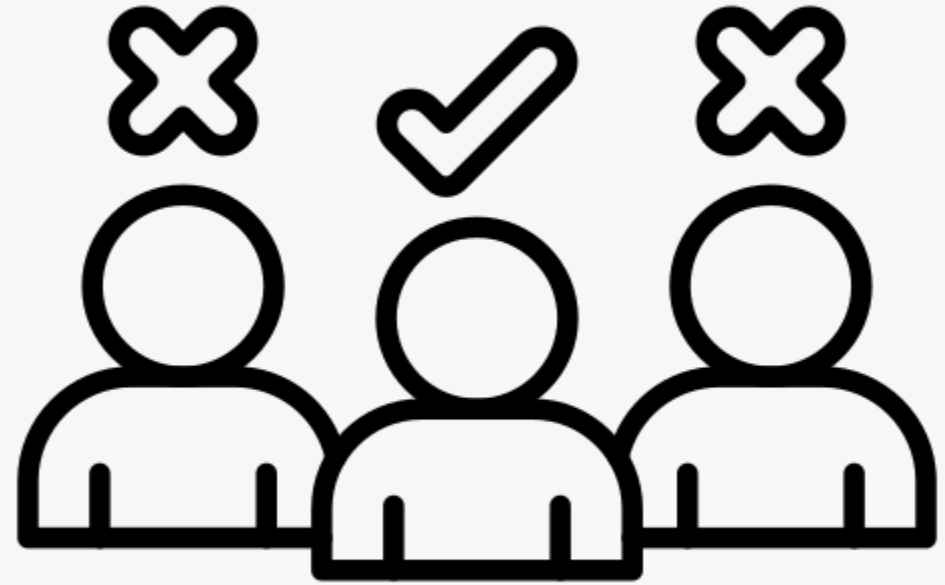
AI Image Generator

A type of generative AI that identifies patterns large amounts of image-based data to generate new images from a text prompt.



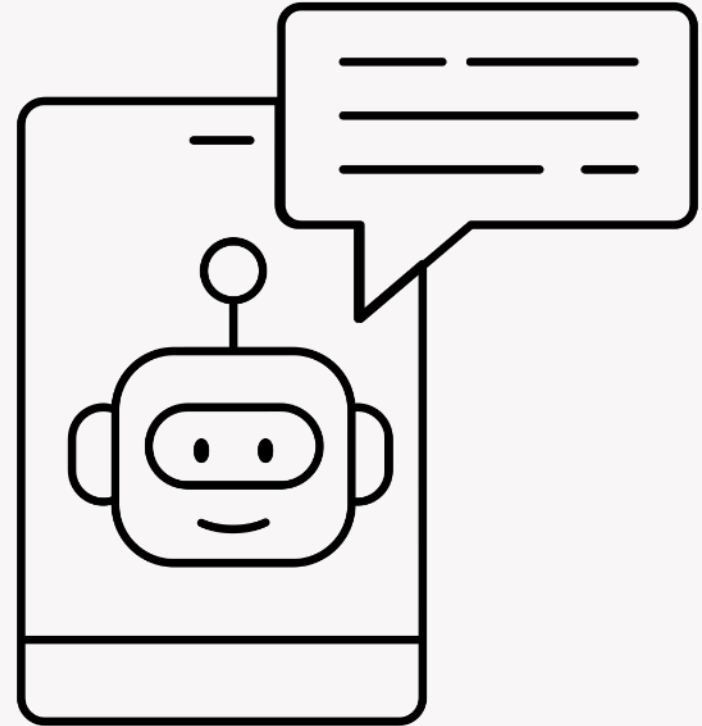
Bias

Prejudice in favour of or against one thing, person, or group compared with another



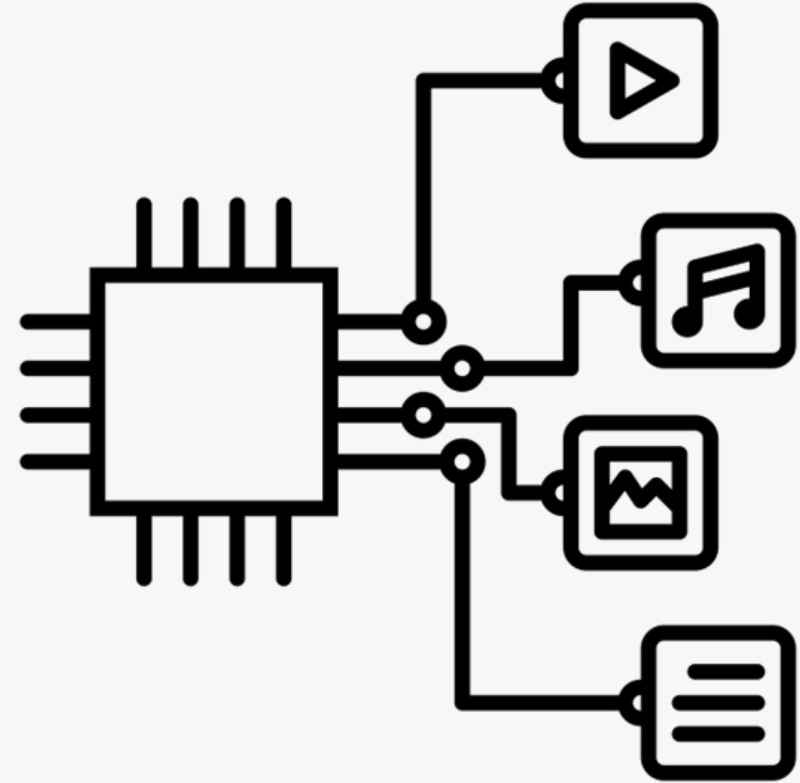
Chatbot

A computer program that can have conversations with humans to help them find out information or solve problems.



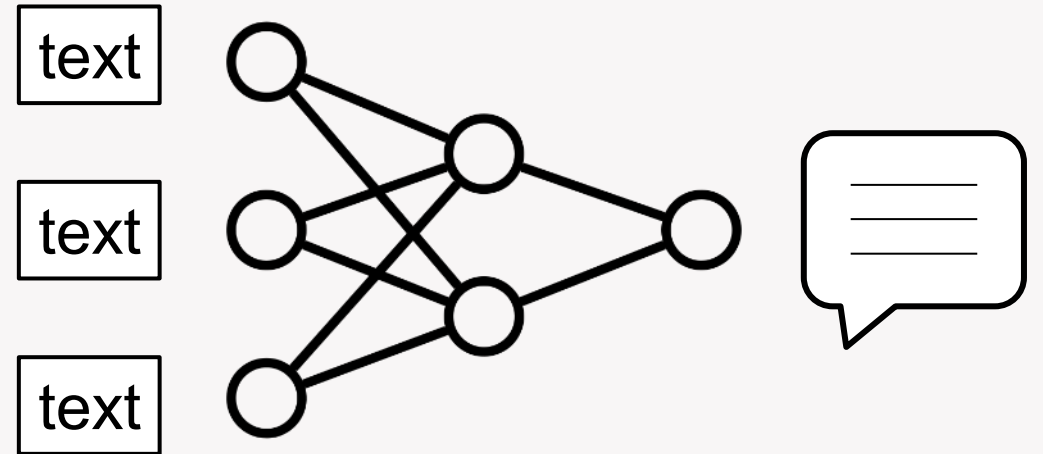
Generative AI

A form of artificial intelligence that looks at patterns in large amounts of data in order to create **new** content, such as text, images, audio and video.



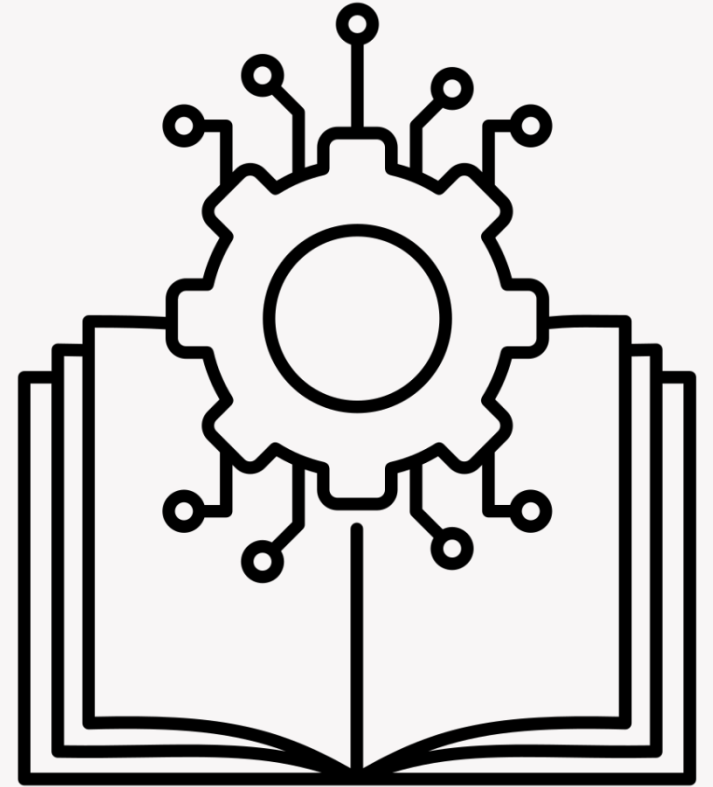
Large Language Model

A type of generative AI that learns patterns from large amounts of text-based data to recognise and generate human-like language.



Machine Learning

A type of artificial intelligence that learns by identifying patterns in data to be able to do a specific task e.g. recognise images, translate languages.



Prompt

The instruction given to a Generative AI tool to create something.

